



206 SERIES SRK

DIN 2353



DIN2353 and other threads available upon request.
AISI 316 available but only for minimum quantities.

• Materials

Carbon Steel *EN -10277-3 / AISI 316L*

Seals: NBR, Viton or EPDM

Back-up-ring: PTFE

Springs: *Carbon Steel DIN 17233/84(B)*

• **Applications:** Designed for Oil hydraulic Applications according to European Directive 97.23.EC

• **Equivalence:** Voswinkel Serie RS
Argus Serie RK

• Working temperature (Seals)

	NBR	Viton	EPDM
+	+100°C	+200°C	+150°C
-	-30°C	-10°C	-40°C

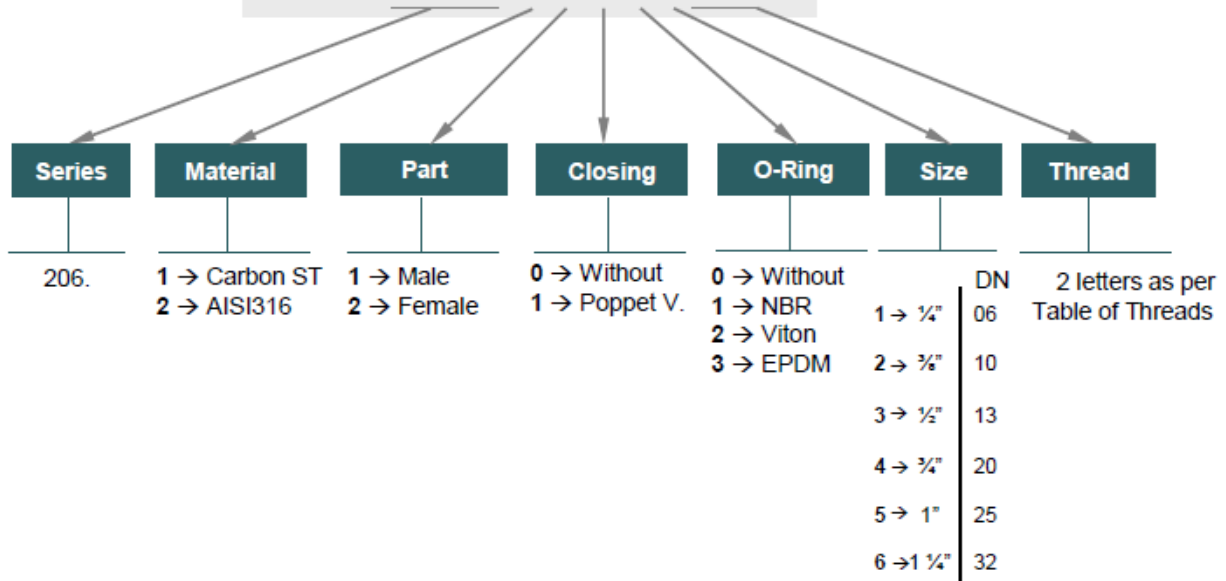
• **Sectors:** Industrial, Agricultural, Construction machinery.



MODEL STRUCTURE

Example;

206.12115 AF



206-1

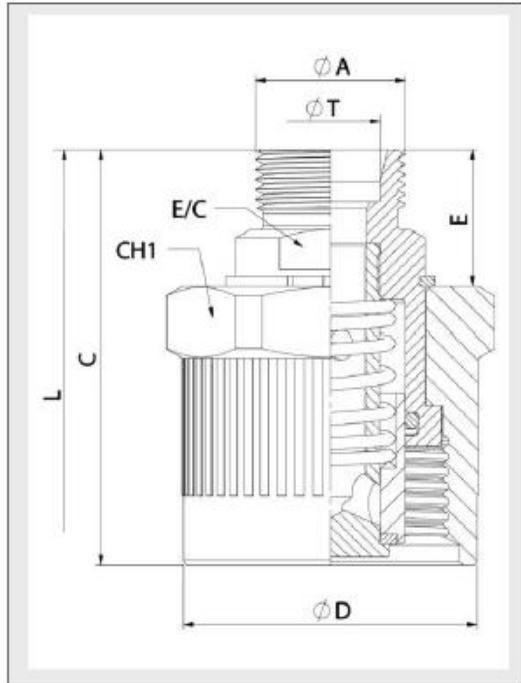





206 SERIES

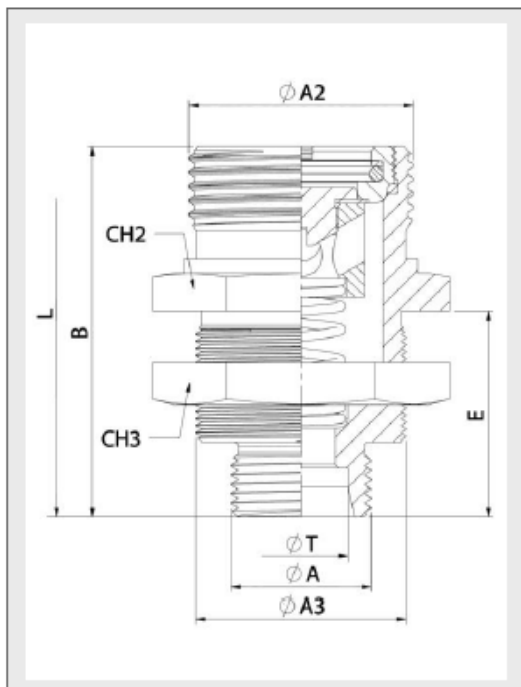
SRK

DIN 2353




STANDARD MALE MODELS

DN	ϕA	ϕT	REF.		CH1	E/C	C	ϕD	E	L
	M14x1,5	8L	206.11112JC							
	M16x1,5	10L	206.11112JD							
	M18x1,5	12L	206.11112JE							
10	M18x1,5	10S	206.11112KE	400 Bar	32	22	62,5	39	21,5	103,5
	M20x1,5	12S	206.11112KF							
	M22x1,5	15L	206.11112JG							
	M22x1,5	14S	206.11112KG							
	M24x1,5	16S	206.11112KH							
	M18x1,5	12L	206.11113JE							
	M22x1,5	15L	206.11113JG							
13	M22x1,5	14S	206.11113KG	300 Bar	46	24	70	45	20	119
	M24x1,5	16S	206.11113KH							
	M26x1,5	18L	206.11113JI							
	M26x1,5	18L	206.11114JI							
20	M30x2	22L	206.11114JJ	320 Bar	60	32	83	59,1	27,4	140
	M30x2	20S	206.11114KJ							
	M36x2	25S	206.11114KK							
	M30x2	22L	206.11115JJ							
25	M30x2	20S	206.11115KJ	300 Bar	55	41	105	63,9	35	144
	M36x2	28L	206.11115JK							
	M36x2	25S	206.11115KK							
	M42x2	30S	206.11115KL							
32	M45x2	35L	206.11116JM	420 Bar	*	55	133	90	38	227
	M52x2	38S	206.11116KN							



STANDARD FEMALE MODELS

DN	ϕA	ϕT	REF.		$\phi A2$	$\phi A3$	CH2	CH3	E	B	L
	M14x1,5	8L	206.12112JC								
	M16x1,5	10L	206.12112JD								
	M18x1,5	12L	206.12112JE								
10	M18x1,5	10S	206.12112KE	400 Bar	Rd 32x3	M30x1	36	36	31	55	103,5
	M20x1,5	12S	206.12112KF								
	M22x1,5	15L	206.12112JG								
	M22x1,5	14S	206.12112KG								
	M24x1,5	16S	206.12112KH								
	M18x1,5	12L	206.12113JE								
	M22x1,5	15L	206.12113JG								
13	M22x1,5	14S	206.12113KG	300 Bar	Rd 36x3	M36x1	41	41	37,5	65	119
	M24x1,5	16S	206.12113KH								
	M26x1,5	18L	206.12113JI								
	M26x1,5	18L	206.12114JI								
20	M30x2	22L	206.12114JJ	320 Bar	Rd 48x3	M45x1,5	55	55	44	79	140
	M30x2	20S	206.12114KJ								
	M36x2	25S	206.12114KK								
	M30x2	22L	206.12115JJ								
25	M30x2	20S	206.12115KJ	300 Bar	Rd 54x4	M54x1,5	55	60	46	89	144
	M36x2	28L	206.12115JK								
	M36x2	25S	206.12115KK								
	M42x2	30S	206.12115KL								
32	M45x2	35L	206.12116JM	420 Bar	Rd 79x4	*	55	133	90	38	227
	M52x2	38S	206.12116KN								



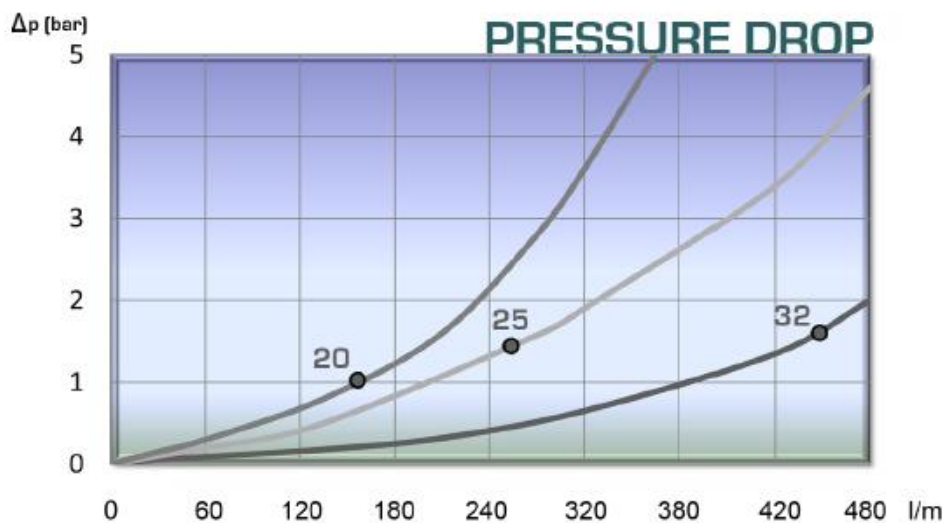
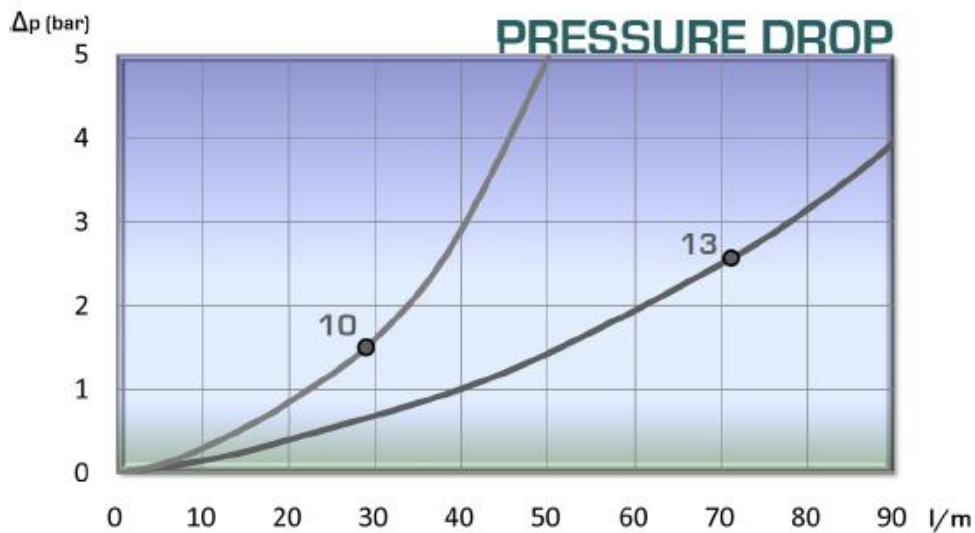
206 SERIES

SRK

DIN2353



TECHNICAL DATA					
DN	Rated Flow	Min Burst Pressure [bar]			Max. Working Pressure *
		Male	Female	Coupled	
10	29 l/min	1500	1580	1600	400 bar
13	72 l/min	1200	1150	1200	300 bar
20	135 l/min	1250	1300	1280	320 bar
25	250 l/min	1200	1150	1200	300 bar
32	430 l/min	1550	1600	1680	420 bar



206-3



206 SERIES SRK

PLUGS
& CAPS

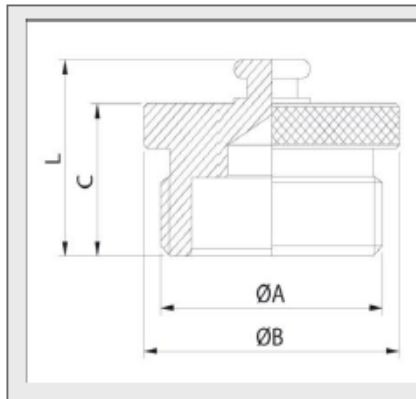
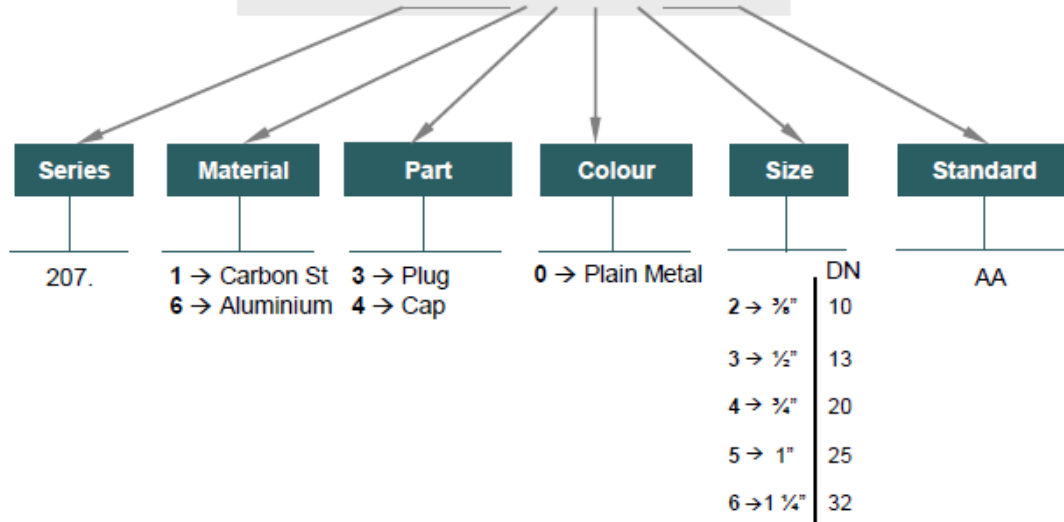


SRK SERIES PLUGS, CAPS and have been designed to protect FEMALE (coupler) or MALE (nipple) parts while they are disconnected.

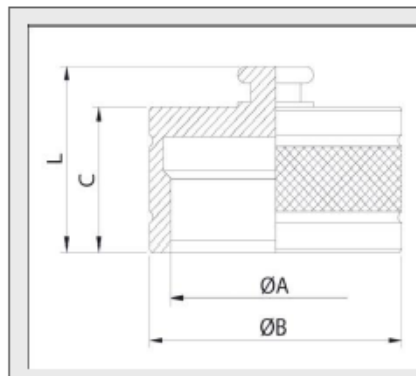
MODEL STRUCTURE

Example;

206.6403 AA



PLUG					
DN	REF.	ØA	ØB	C	L
10	206.6302AA	32x3	39	25	31
13	206.6303AA	36x3	44,5	25	31
20	206.6304AA	48x3	59	32	38
25	206.6305AA	54x4	64	39	45
32	206.6306AA	79x4	89,5	44	50



CAP					
DN	REF.	ØA	ØB	C	L
10	206.6402AA	32x3	39	26	32
13	206.6403AA	36x3	44,5	24	30
20	206.6404AA	48x3	59	34	40
25	206.6405AA	54x4	64	42	48
32	206.6406AA	79x4	89,5	74	80