



# 207 SERIES CAT



DIN3852 and other threads available upon request.  
AISI 316 available but only for minimum quantities.

• **Materials**

Carbon Steel *EN - 10277-3 / AISI 316L*

Seals: NBR, Viton or EPDM

Back-up-ring: PTFE

Springs: *Carbon Steel DIN 17233/84(B)*

• **Applications:** Designed for Oil hydraulic Applications according to European Directive 97.23.EC

• **Equivalence:** DNP VAV

• **Working temperature (Seals)**

	NBR	Viton	EPDM
+	+100°C	+200°C	+150°C
-	-30°C	-10°C	-40°C

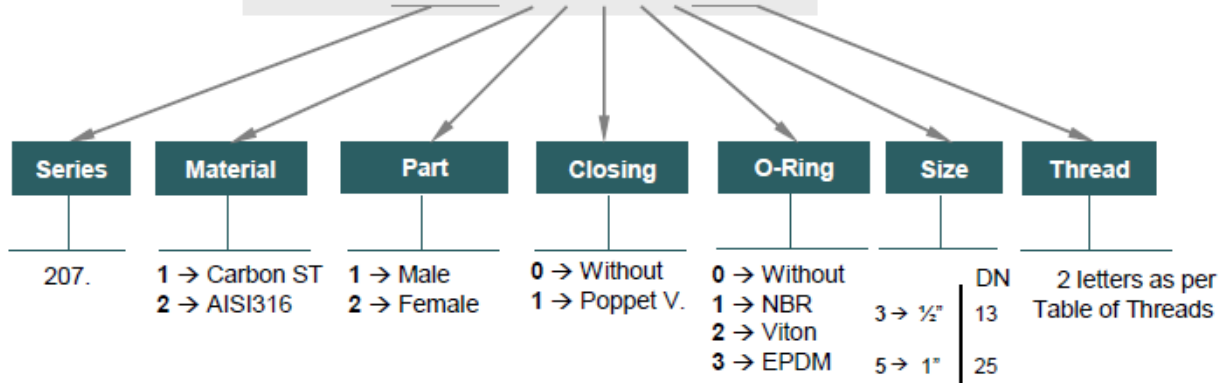
• **Sectors:** Industrial, Agricultural, Construction machinery.



MODEL STRUCTURE

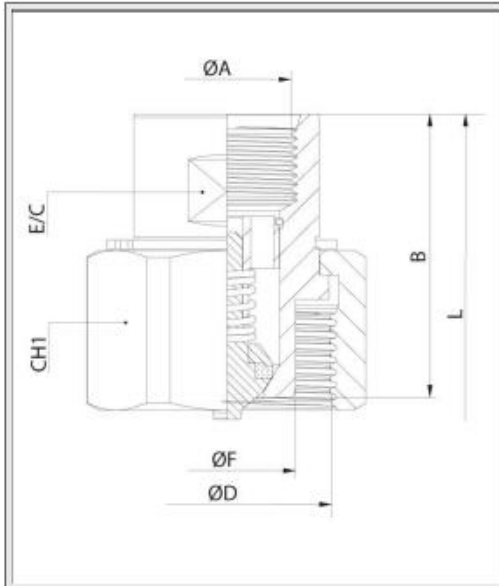
Example;


**207.12113 NG**

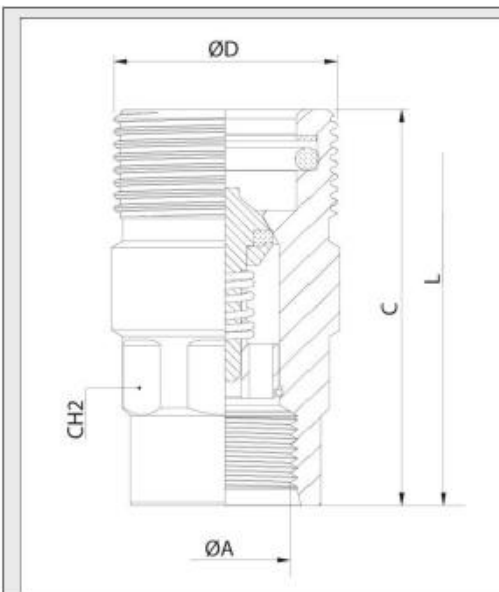





# 207 SERIES CAT



MALE									
DN	ØA	E/C	CH1	B	ØF	ØD	L	REF.	
13	M22x1,5	27	41	46	22,25	Rd 35x2	92	207.11113NG	400 Bar
25	M30x1,5	36	65	68	38	Rd 54x3	134	207.11115NS	360 Bar



FEMALE							
DN	ØA	CH2	C	ØD	L	REF.	
13	M22x1,5	30	62	Rd 35x2	92	207.12113NG	400Bar
25	M30x1,5	46	96	Rd 54x3	134	207.12115NS	360 Bar



# 207 SERIES CAT

PLUGS  
& CAPS

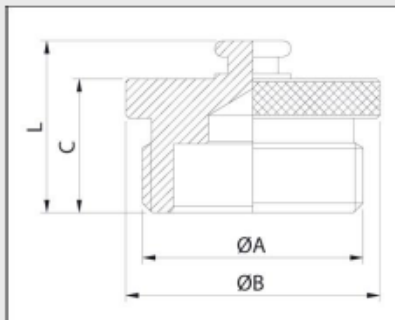
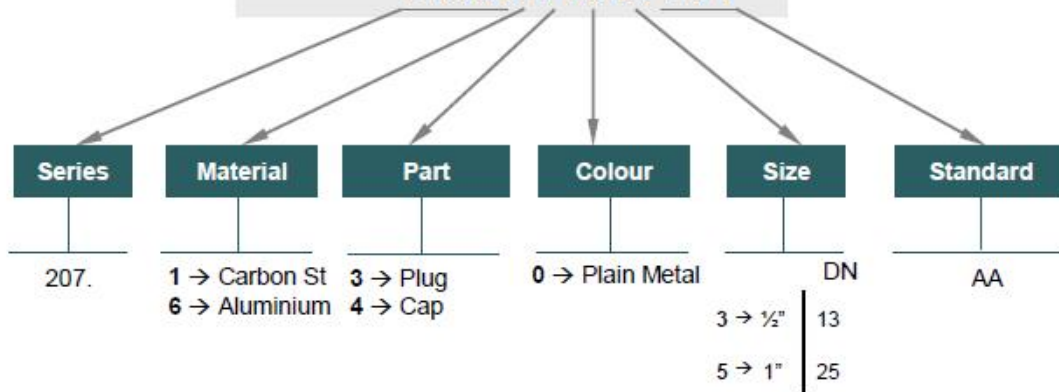
INTEVA

CAT SERIES PLUGS, CAPS and have been designed to protect FEMALE (coupler) or MALE (nipple) parts while they are disconnected.

## MODEL STRUCTURE

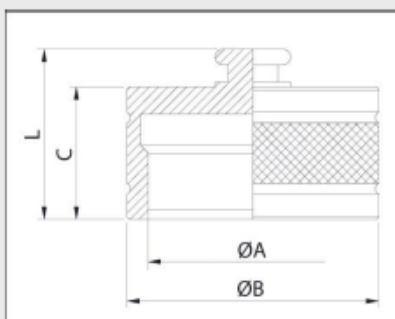
Example;

### 207.6403 AA



### PLUG

DN	REF.	ØA	ØB	C	L
13	207.6303AA	Rd 35x2	40	21	27
25	207.6305AA	Rd 54x3	60	37,5	43,5



### CAP

DN	REF.	ØA	ØB	C	L
13	207.6403AA	Rd 35x2	40	21	27
25	207.6405AA	Rd 54x3	60	29	35

207-3

