



107 SERIES PSM

DIN2353 Threads
DIN2353 Bulkhead
DIN3852 BSP/NPTF/ORB

Manufactured according to ISO 7241-A and ISO 5675 norms.
Poppet Valve or Ball closing system.
DIN2353 threads. Other threads available upon request.

• Materials

Carbon Steel EN -10277-3
Seals: NBR
Back-Up-Ring: PTFE
Balls: AISI 1010/1015
Springs: Carbon Steel
DIN 17233/84(B)

• Working temperature (Seals)

	NBR	Viton	EPDM
+	+100°C	+200°C	+150°C
-	-30°C	-10°C	-40°C

• **Applications:** Designed for Oil hydraulic Applications according to European Directive 97.23.EC

• **Sectors:** Industrial, Agricultural

• Equivalence

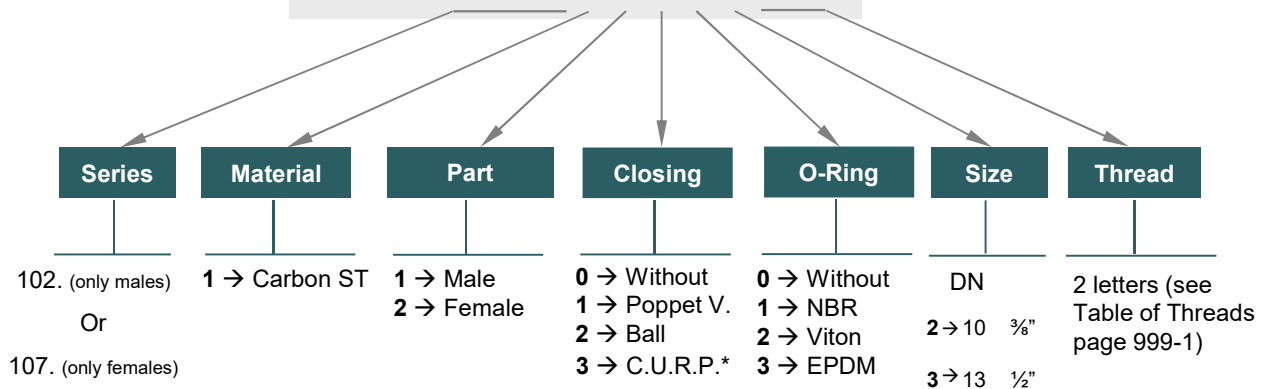
FASTER PV 9
CPV
ARGUS SVK
PARKER 4200



MODEL STRUCTURE

Example:

107.12113 KF



* DN13 available only.

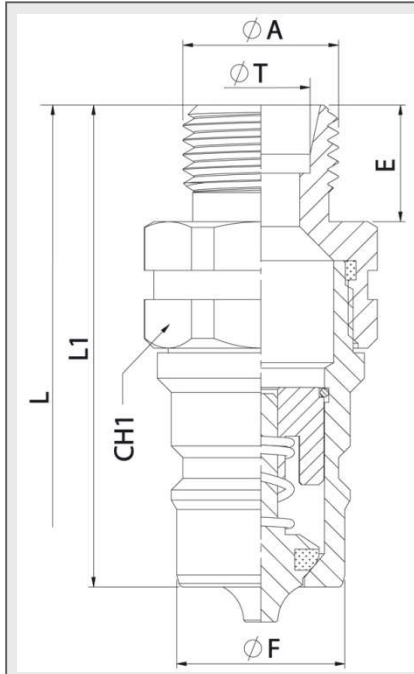
107-1



107 SERIES

PSM

DIN2353
Threads

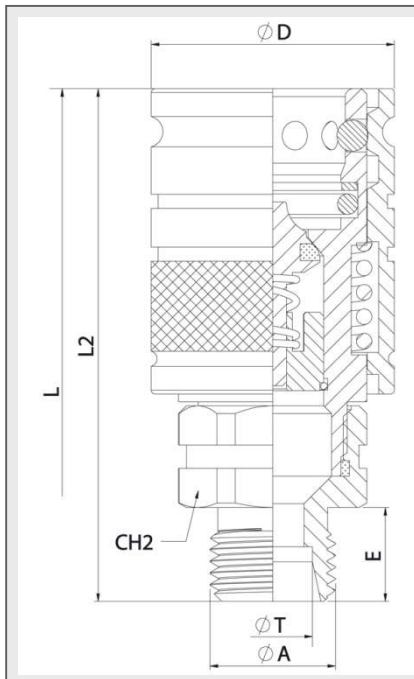


MALE					
DN	CH1	L1	ØF	L	E
10	22	49,57	17,30	97,07	12
13	27 30	56 79	20,56	105,80 151,80	12 35

* DN10 MALE drawing

STANDARD MALE MODELS

DN	ØA	ØT	REF.	
10	M12x1,5	6L	102.11112JB	270Bar
	M14x1,5	8L	102.11112JC	
	M16x1,5	10L	102.11112JD	
	M18x1,5	12L	102.11112JE	
	M16x1,5	8S	102.11112KD	
	M18x1,5	10S	102.11112KE	
	M20x1,5	12S	102.11112KF	
13	3/8" BSP	-	102.11112AN	250Bar
	M14x1,5	8L	102.11113JC	
	M16x1,5	10L	102.11113JD	
	M18x1,5	12L	102.11113JE	
	M22x1,5	15L	102.11113JG	
	M26x1,5	18L	102.11113JI	
	M18x1,5	10S	102.11113KE	
	M20x1,5	12S	102.11113KF	
	M22x1,5	14S	102.11113KG	
	M24x1,5	16S	102.11113KH	
M30x2	20S	102.11113KJ		



FEMALE					
DN	CH2	L2	ØD	L	E
10	22	65,50	31	97,07	12
13	27 30	71,80 94,80	37,80	105,80 151,80	12 35

* DN10 FEMALE drawing

STANDARD FEMALE MODELS

DN	ØA	ØT	REF.	
10	M12x1,5	6L	107.12112JB	270Bar
	M14x1,5	8L	107.12112JC	
	M16x1,5	10L	107.12112JD	
	M18x1,5	12L	107.12112JE	
	M16x1,5	8S	107.12112KD	
	M18x1,5	10S	107.12112KE	
	M20x1,5	12S	107.12112KF	
13	3/8" BSP	-	107.12112AN	250Bar
	M14x1,5	8L	107.12113JC	
	M16x1,5	10L	107.12113JD	
	M18x1,5	12L	107.12113JE	
	M22x1,5	15L	107.12113JG	
	M26x1,5	18L	107.12113JI	
	M18x1,5	10S	107.12113KE	
	M20x1,5	12S	107.12113KF	
	M22x1,5	14S	107.12113KG	
	M24x1,5	16S	107.12113KH	
M30x2	20S	107.12113KJ		



107 SERIES

PSM

DIN2353
Bulkhead



MALE							
DN	CH1	CH2	L1	ØD	L		
10	22	19	71,57	17,30	141,07		
		22					
		24					
		19				78	149,80
		30				79	151,80
13	27	24	68	129,80			
		27	79	151,80			
		30	56	105,80			
		24	68	129,80			
		27	79	151,80			
		27	79	151,80			
		30	79	151,80			
		30	79	151,80			
		30	36	79	151,80		

* DN13 MALE drawing

STANDARD MALE MODELS			
DN	ØA	ØT	REF.
10	M12x1,5	6L	102.11112LB
	M14x1,5	8L	102.11112LC
	M16x1,5	10L	102.11112LD
	M18x1,5	12L	102.11112LE
	M16x1,5	8S	102.11112MD
	M18x1,5	10S	102.11112ME
13	M20x1,5	12S	102.11112MF
	M14x1,5	8L	102.11113LC
	M16x1,5	10L	102.11113LD
	M18x1,5	12L	102.11113LE
	M22x1,5	15L	102.11113LG
	M26x1,5	18L	102.11113LI
	M18x1,5	10S	102.11113ME
	M20x1,5	12S	102.11113MF
	M22x1,5	14S	102.11113MG
	M24x1,5	16S	102.11113MH
	M30x2	20S	102.11113MJ

FEMALE							
DN	CH2	CH3	L2	ØD	L		
10	22	19	87,5	31	141,07		
		22					
		24					
		19				78	149,80
		30				79	151,80
13	27	24	68	129,80			
		27	79	151,80			
		30	56	105,80			
		24	68	129,80			
		27	79	151,80			
		27	79	151,80			
		30	79	151,80			
		30	79	151,80			
		30	36	79	151,80		

* DN13 FEMALE drawing

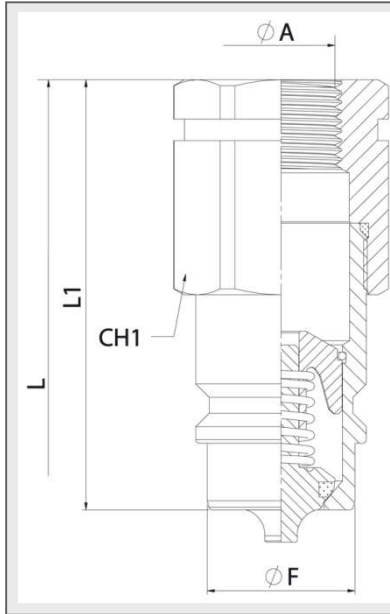
STANDARD FEMALE MODELS			
DN	ØA	ØT	REF.
10	M12x1,5	6L	107.12112LB
	M14x1,5	8L	107.12112LC
	M16x1,5	10L	107.12112LD
	M18x1,5	12L	107.12112LE
	M16x1,5	8S	107.12112MD
	M18x1,5	10S	107.12112ME
13	M20x1,5	12S	107.12112MF
	M14x1,5	8L	107.12113LC
	M16x1,5	10L	107.12113LD
	M18x1,5	12L	107.12113LE
	M22x1,5	15L	107.12113LG
	M26x1,5	18L	107.12113LI
	M18x1,5	10S	107.12113ME
	M20x1,5	12S	107.12113MF
	M22x1,5	14S	107.12113MG
	M24x1,5	16S	107.12113MH
	M30x2	20S	107.12113MJ



107 SERIES

PSM

DIN 3852
BSP/NPTF/ORB



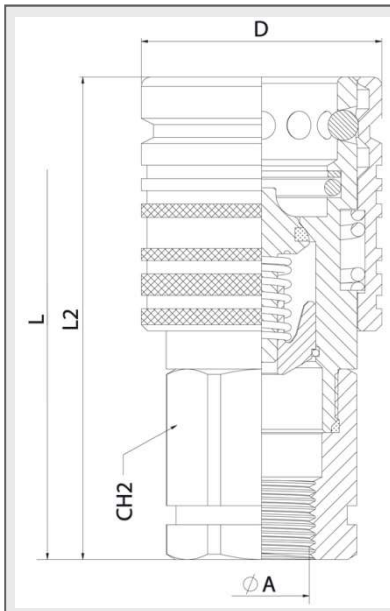
MALE						
DN	ØA	CH1	L1	ØF	L	
10	1/4" BSP	22	50,57	17,30	99,07	
	1/4" NPTF	22				
	3/8" BSP	22				
	3/8" NPTF	22				
	M16x1,5	22				
	M18x1,5	22				
13	3/8" BSP	27	20,56		113,80	
	1/2" BSP	27			113,80	
	3/4" NPTF	30			117,80	
	M14x1,5	27			113,80	
	M16x1,5	27			113,80	
	M18,1,5	27			113,80	
	M22x1,5	27			117,80	
	3/4" -16ORB	27			113,80	
	7/8" -14ORB	27			113,80	
	* 3/4" -16ORB	27			67,20	128,20

* DN13 MALE drawing

STANDARD MALE MODELS

DN	ØA	REF.	
10	1/4" BSP	102.11112AB	270Bar
	1/4" NPTF	102.11112BB	
	3/8" BSP	102.11112AC	
	3/8" NPTF	102.11112BC	
	M16x1,5	102.11112ND	
	M18x1,5	102.11112NE	
13	3/8" BSP	102.11113AC	250Bar
	1/2" BSP	102.11113AD	
	3/4" NPTF	102.11113BE	
	M14x1,5	102.11113NC	
	M16x1,5	102.11113ND	
	M18x1,5	102.11113NE	
	M22x1,5	102.11113NG	
	3/4" -16ORB	102.11113GF	
7/8" -14ORB	102.11113GH		
* 3/4" -16ORB	102.11113GFA		

* This reference is habitually provided in the Spanish market, being the head cylindrical instead of 27mm hexagonal.



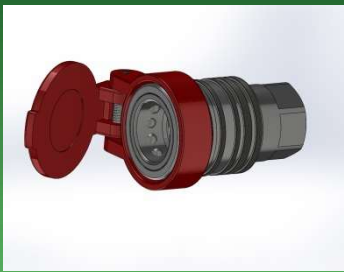
FEMALE						
DN	ØA	CH2	L2	ØD	L	
10	1/4" BSP	22	66,5	31	99,07	
	1/4" NPTF	22				
	3/8" BSP	22				
	3/8" NPTF	22				
	M16x1,5	22				
	M18x1,5	22				
13	3/8" BSP	27	37,80		113,80	
	1/2" BSP	27			113,80	
	3/4" NPTF	30			117,80	
	M14x1,5	27			113,80	
	M16x1,5	27			113,80	
	M18,1,5	27			113,80	
	M22x1,5	27			117,80	
	3/4" -16ORB	27			113,80	
	7/8" -14ORB	27			113,80	
	* 3/4" -16ORB	27			83	128,20

* DN13 FEMALE drawing

STANDARD FEMALE MODELS

DN	ØA	REF.	
10	1/4" BSP	107.12112AB	270Bar
	1/4" NPTF	107.12112BB	
	3/8" BSP	107.12112AC	
	3/8" NPTF	107.12112BC	
	M16x1,5	107.12112ND	
	M18x1,5	107.12112NE	
13	3/8" BSP	107.12113AC	250Bar
	1/2" BSP	107.12113AD	
	3/4" NPTF	107.12113BE	
	M14x1,5	107.12113NC	
	M16x1,5	107.12113ND	
	M18,1,5	107.12113NE	
	M22x1,5	107.12113NG	
	3/4" -16ORB	107.12113GF	
7/8" -14ORB	107.12113GH		
* 3/4" -16ORB	107.12113GFA		

* This reference is habitually provided in the Spanish market, being the head cylindrical instead of 27mm hexagonal.



107 SERIES

PSM PLUGS & CAPS



PSM SERIES PLUGS/CAPS have been designed to protect FEMALE (coupler) or MALE (nipple) parts while they are disconnected.

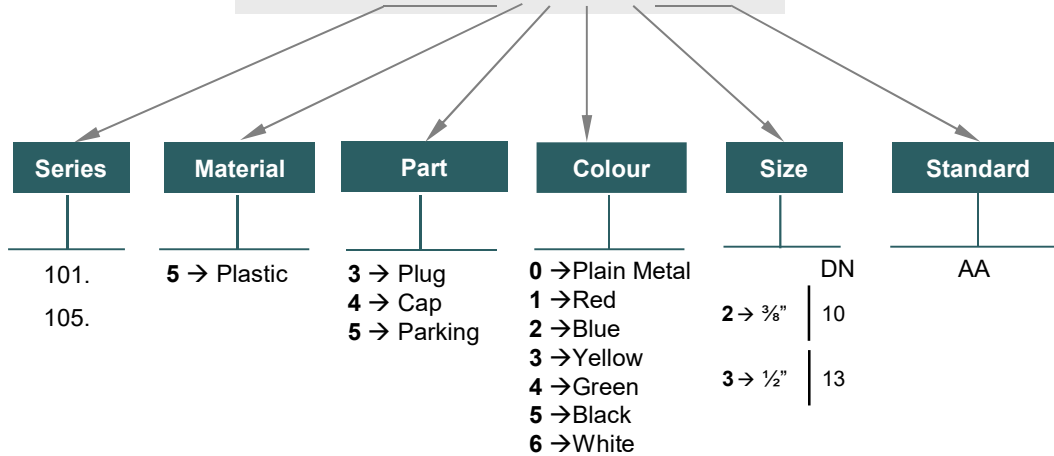
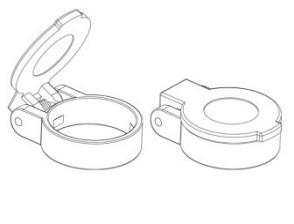
Manufactured according to ISO 7241-A norm, DN13 size meets also ISO 5675 requirements.

MODEL STRUCTURE


For plugs/caps and parking parts

Example:


105.5413 AA

CAP						
DN	RED	BLUE	YELLOW	GREEN	BLACK	WHITE
10	105.5412AA	*	*	*	*	*
13	105.5413AA	*	*	*	*	*



PLUG						
DN	RED	BLUE	YELLOW	GREEN	BLACK	WHITE
10	101.5312AA	*	*	*	*	*
13	101.5313AA	*	*	*	*	*



CAP						
DN	RED	BLUE	YELLOW	GREEN	BLACK	WHITE
10	101.5412AA	*	*	*	*	*
13	101.5413AA	*	*	*	*	*

* Other colors available upon request.